

ERRATA

Erratum: “The First Protein Map of *Synechococcus* sp. Strain PCC 7942” [*Microbiology* 75, 664 (2006)]

O. A. Koksharova^{a, b, 1}, Johan Klint^b, and Ulla Rasmussen^b

^a Vavilov Institute of General Genetics, Russian Academy of Sciences, ul. Gubkina 3, 119991 Moscow, Russia

^b Department of Botany, Stockholm University, SE-106 91 Stockholm, Sweden

Received December 28, 2006

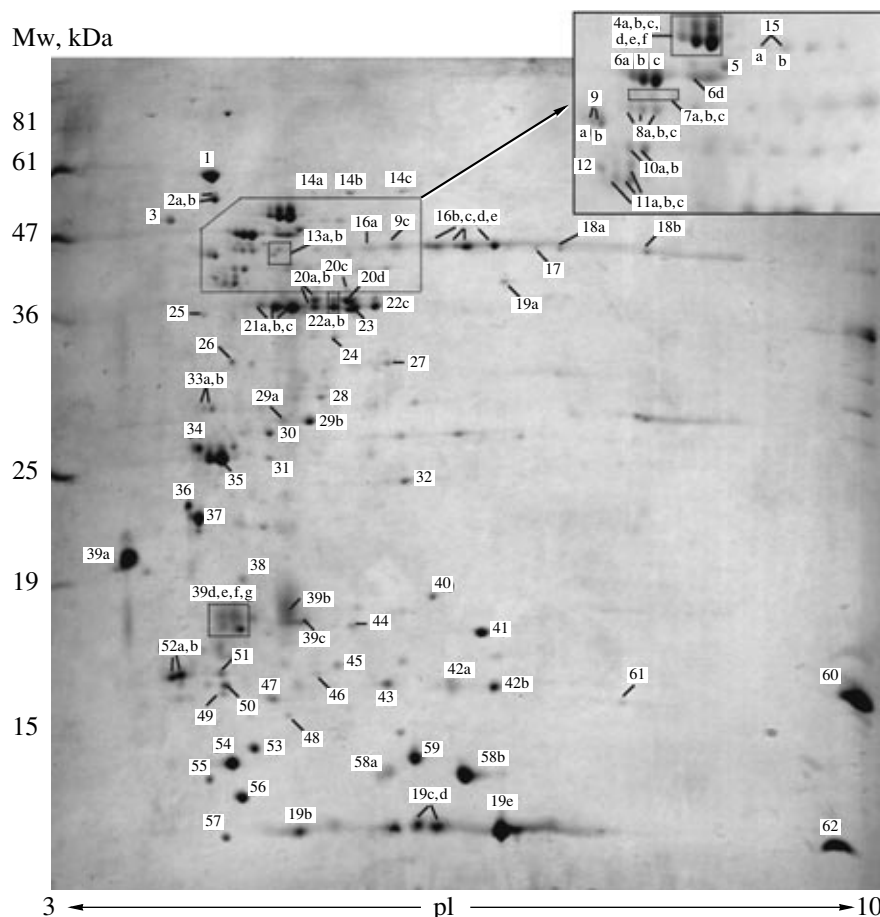
DOI: 10.1134/S0026261707010195

(1) On page 667, Table, Group 3: The words **Spot no. 12** should be read **Spot no. 31**

(2) On page 670, right column, line 39: The words (**the table, group 18**) should be read (**the table, group 15**)

(3) On page 669, Figure, insert (upper box): The signs **8a,b,c,d,e,f** should be read **4a,b,c,d,e,f**

(4) On page 669, Figure, insert (middle box): The signs **8a,b,c** should be read **7a,b,c**



Two-dimensional electrophoresis protein index (Coomassie-stained gel) of total protein of *Synechococcus* sp. strain PCC 7942. The protein molecular weight standard (Mw) (y axis) and isoelectric points (pI) (x axis) are shown. The identification of each labeled spot is presented in the table.

¹ Corresponding author; e-mail: oa-koksharova@rambler.ru